



**Mercy
Without
Limits**

2020
Annual Report



Table of contents

Letter From Chairman	4
Board Members	6
About Mercy Without Limits	8
Where We Work	10
Our Programs	12
Protection	14
Shelter & NFI	24
Education	26
Food Security	34
Health	40
Early Recovery & Livelihood	42
WASH	48
Seasonal Projects	56
Our Partners	70
Independent Auditor's Report	72

Letter from Chairman

Dear Friends,

I hope this letter finds you and your family in good health.

It is with sincere gratitude that I write this letter on behalf of all Mercy Without Limits staff. Much has changed in the recent year for the world, but our mission and vision remain a top priority for us at Mercy Without Limits. Although many have encountered difficulties in 2020, I would like to thank everyone who stayed committed and continued to support Mercy Without Limits. As I reflect over this past year, I am inspired by the tremendous support Mercy Without Limits has received from our generous supporters. You have continuously dedicated your time, funds, and compassion to those who needed it most. That spirit of connection and understanding is what we treasure so dearly. Thank you for your commitment and for playing a critical role in our efforts to empower those whom are less fortunate.

We are honored to have you as our supporter and friend. I want to personally thank each one of you for your time, commitment, dedication over the past year.

Sincerely,



Mohamad Naser Albadawi
Chairman of the Board/President



MWL

Board Members

Mohamad Albadawi

Chairman of the Board/ President

Sami Banyalmarjeh

Board Member and Secretary

Mustafa Hussein

Treasurer

Samir Jesri

Board member

Mohamed Elhewizy

Board member



About Mercy Without Limits

Since its establishment in 2012, MWL has been dedicated to addressing humanitarian needs for orphans, widows, and refugees regardless of age, gender, race, or religion.



Vision

A better world for children and women.

Mission

To educate and empower women and children by enabling them to have an effective and positive role in constructing a better society.

Promise

Mercy Without Limits strives to meet the needs of underserved communities so future generations have the tools they need to create a better future. Working with partners around the world, we empower communities to recover, build resiliency, and thrive in the face of unfortunate circumstances.

MWL believes that regardless of gender, age religion or ethnicity everyone deserves the necessities of life. Inclusion is how we unleash the power of diversity. We respect and recognize all cultures and communities.

MWL ensures that all stakeholders are involved in assessment, program designing, and implementation to provide a more improved quality outcome for our beneficiaries.

We want to empower people to make positive changes in their lives, the lives of their children. And the community as a whole.

Where We Work



MWL Programs



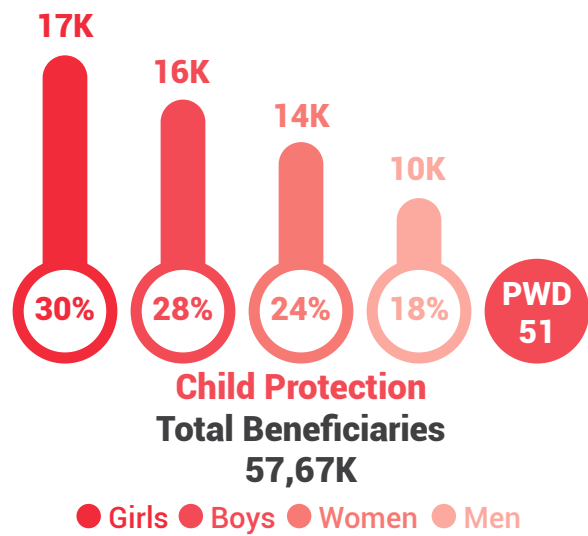


Protection

To endure the protection of the people, MWL's services include cash for protection and child protection by mine action.

Child Protection

The focus on treating children's mental, physical and psychological health has become one of the most prioritized focuses for humanitarian organizations across the world. MWL is dedicated to the implementation of this mission by partnering with humanitarian agencies to conduct projects internationally. Child protection programs MWL executes include recreational activities, structured and semi-structured psychological support, and awareness campaigns that focus on subjects such as personal hygiene and education.



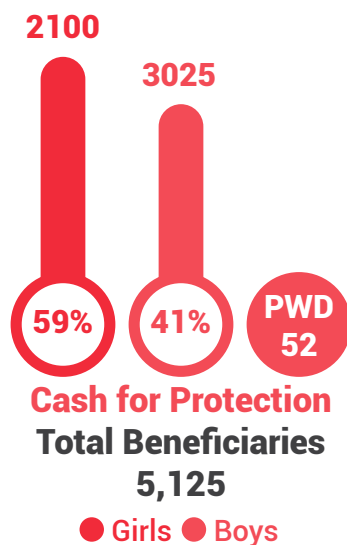
Without Limits - 2020 Annual Report

Cash for Protection

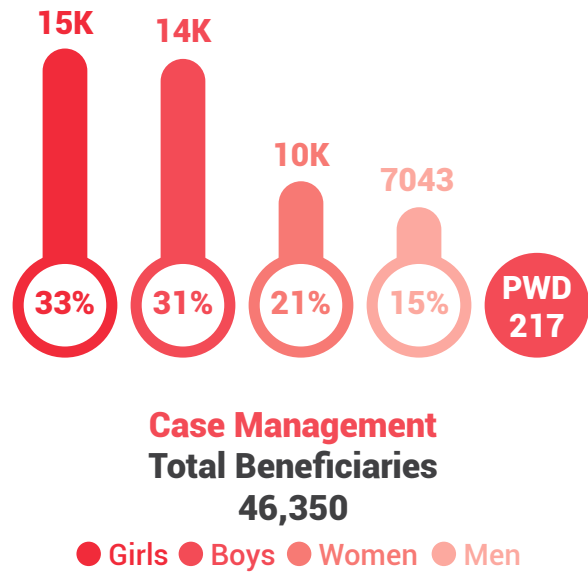
The Cash Assistance for Protection program is aimed to achieve protection outcomes in the protection sector in humanitarian settings in 8 countries. This program delivers cash assistance that covers necessities, as well as health and psychological care that is needed. Cash assistance is provided for other services that are assessed based on demand.

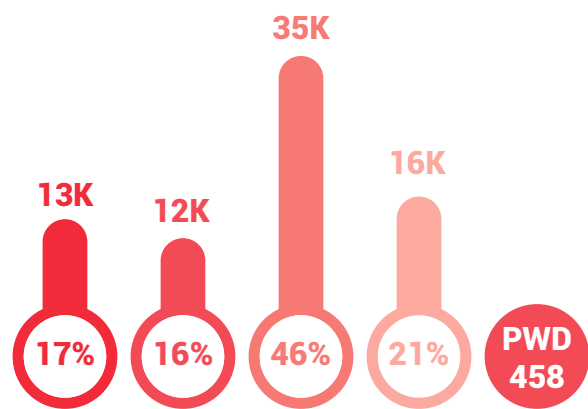
Protection Services

- Bi-annual Health checkups for children
- Follow up Medical care
- Holiday Clothing & gifts
- Seasonal Food Baskets



Mercy Without Limits - 2020 Annual Report



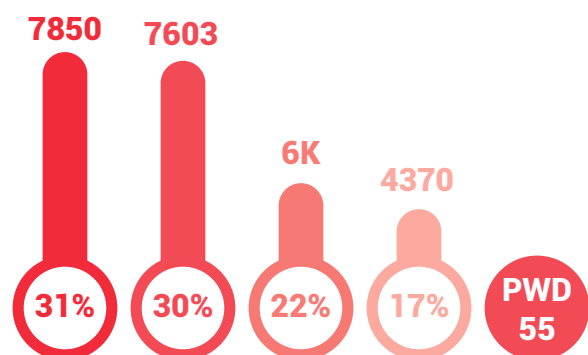


General Protection
Total Beneficiaries
77,060

● Girls ● Boys ● Women ● Men



Mercy Without Limits - 2020 Annual Report



Mine Action
Total Beneficiaries
25,560

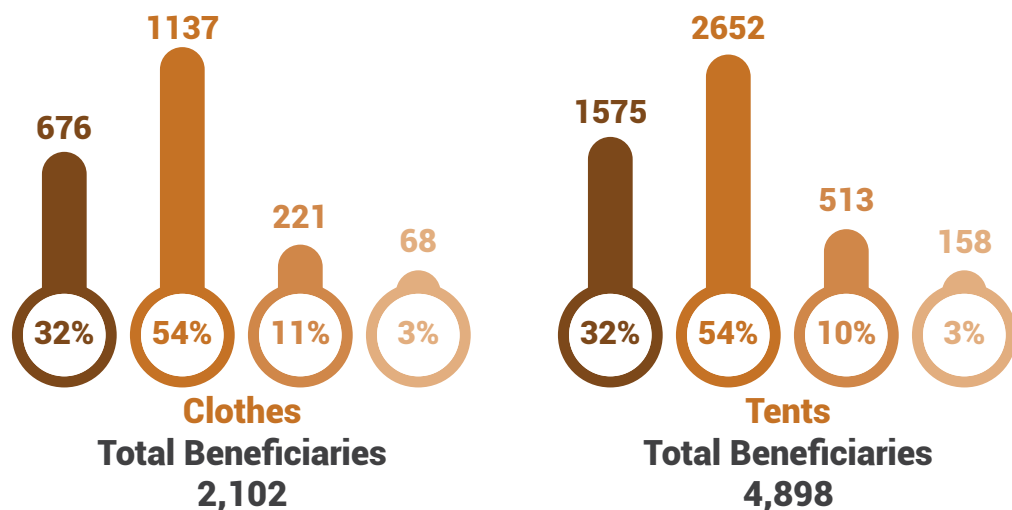
● Girls ● Boys ● Women ● Men



Shelter & NFI

People affected by disasters and internally displaced people affected by conflict with the means to live in a safe and dignified shelter. Shelter is a vital survival mechanism in time of crisis or displacement. It is also key to restoring personal security and dignity. MWL provides tents and shelters to Rohingya Refugees in Bangladesh. Shelters were implemented to expand shelter capacity and improve living conditions.

● Girls ● Boys ● Women ● Men



49 PWD

Total of People with Disabilities (PWD) benefited from our shelter program





Education

Formal & Non-Formal Education

Mercy Without Limits aims at subsidizing educational programs that provide students with the necessary tools to excel in their communities. Increased dropout rates have occurred due to conflict, poverty and life challenges. MWL works towards improving the global education crisis by implementing numerous education projects meeting the huge demands of educational basic needs such as learning kits, rehabilitation schools, teachers' incentives, etc. Accelerated learning programs were provided to children that were disadvantaged to provide them with equivalent educational standards to children their age. Children with special needs were served in all projects, maintaining equal opportunity for all children. Furthermore, back to learning campaigns were conducted to bring awareness to communities about the risk of negative coping behavior such as child labor, early marriage and recruitment in armored group.

Formal Education
77,910
 Students

Non-formal Education
51,941
 Students



Rehabilitated Classrooms

59

Supported Schools

34

Trained Teachers

604

Liters of Heating Fuel

25,169

Bags distributed to Students

17,547



Higher Education

Aleppo University

Schools:

Medicine, Dentistry, Pharmacy, Agricultural Engineering, Science, Law, Economics, Political Science, Literature.

Community Colleges:

Physiotherapy, Security & Protection, Sciences, Midwifery, Patient Care Technician, Turkish Literature, Emergency, First Aid Practice, Computer Programming, Office Administration.

2

Universities
in Northern Syria

18

Institutes

28

Colleges



10,869
Higher Education Students

241
Postgraduate Students

122
Teachers

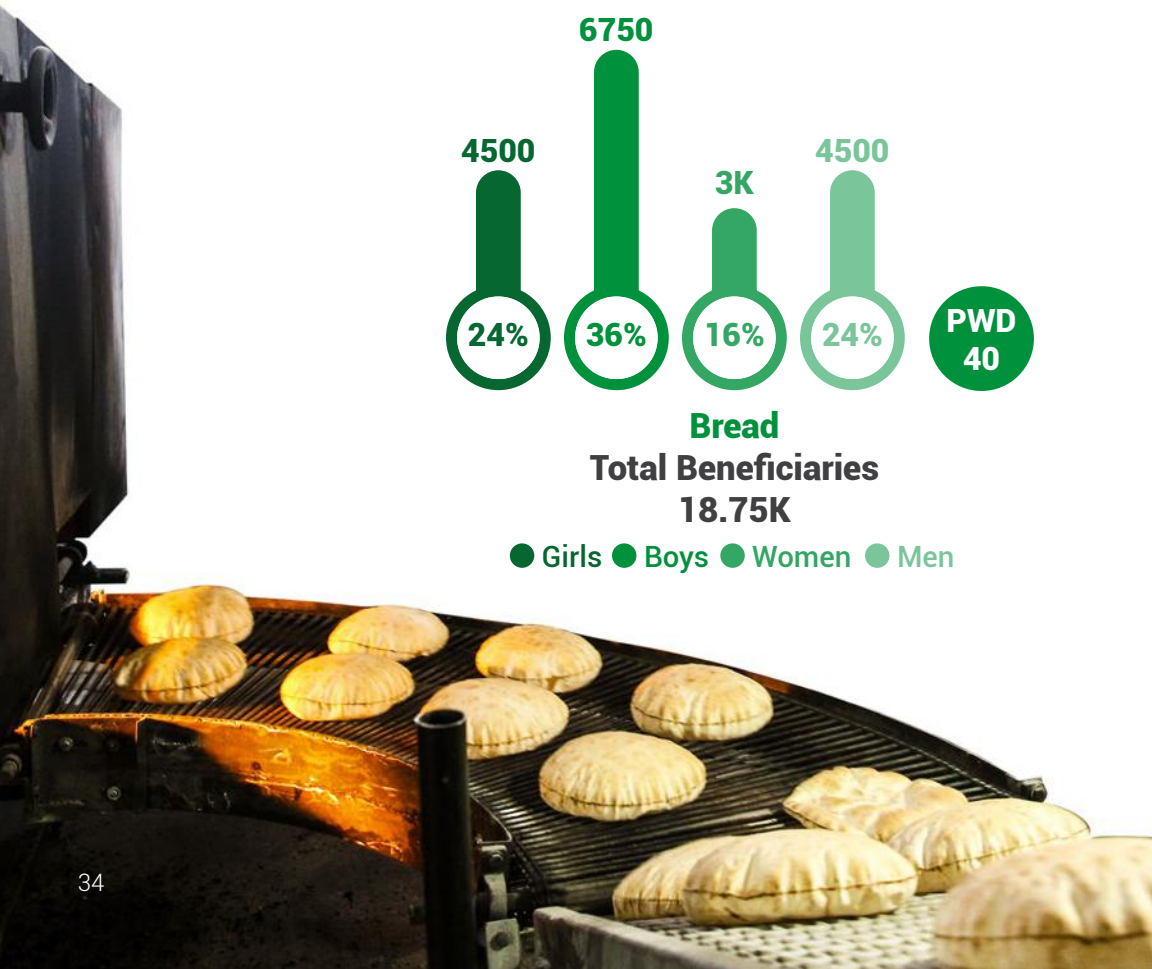
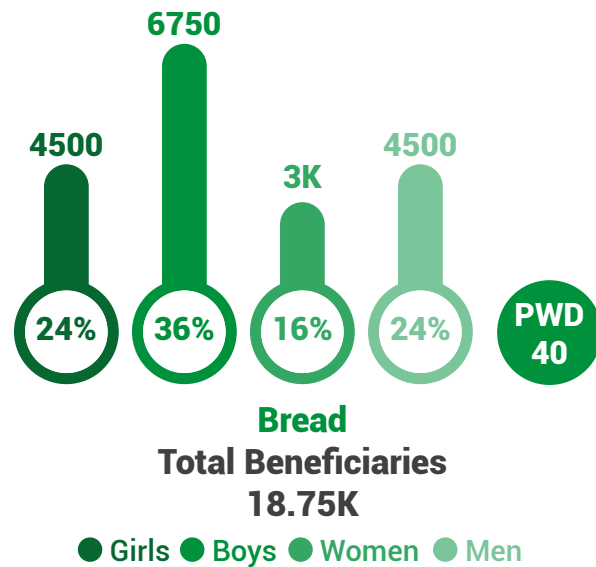
111
Employees





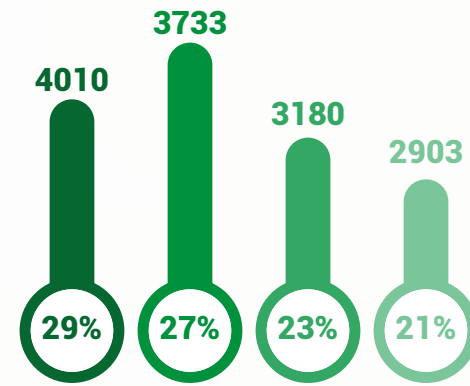
Food Security

Mercy Without Limits provides sustainable nourishment to those facing food scarcity by partnering up with other NGOs to implement agriculture and livelihood services. MWL serves through private funds to execute projects that aim to provide food baskets, Ramadan hot meals, etc. The projects implemented aim at providing sustainable nourishment to those facing food scarcity by improving economic circumstances and deplete the inflation and livelihood rate.



Providing sustainable nourishment to those facing food scarcity.





Food Baskets
Total Beneficiaries
13,828

● Girls ● Boys ● Women ● Men



Food baskets distributed to victims of the Beirut Explosion

50K
Total Beneficiaries



Mercy Without Limits' wide experience in health care services aims at improving and providing access to health care services to save the lives of those affected. Many countries suffer from the medical crisis as they see an increase in violence, war, and social instability. There are functioning health care facilities, but many get destroyed and continue to operate, while suffering from shortages of water, electricity and supplies. The insufficiency of health service facilities has led to the outbreak of diseases as well an increase in the morbidity and mortality rate in communities we serve.

30 Devices

High Flow Oxygen Systems





Early Recovery & Livelihood

Mercy Without Limits believes youth and women play an essential role in the development of any society. MWL implemented projects that focused on these demographics to take their roles as effective members in society. They receive training sessions that teach them life skills to launch their own small businesses. These projects led to receiving grants that would focus on similar projects in the future.

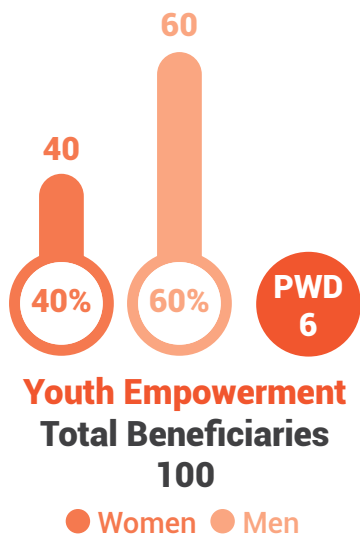
321

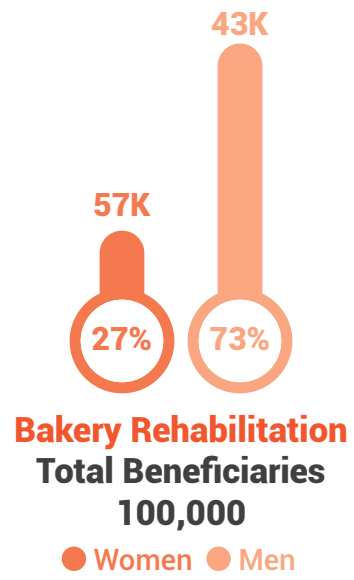
**Women Benefited from
Cash for Work activities**

1,570

**Total Beneficiaries from
Road Paving**





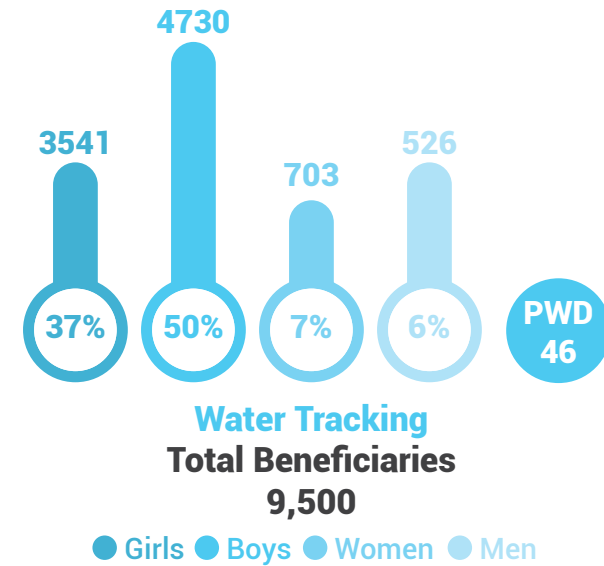


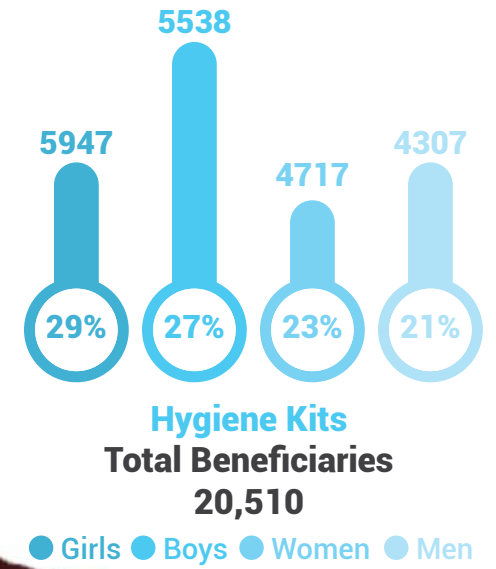


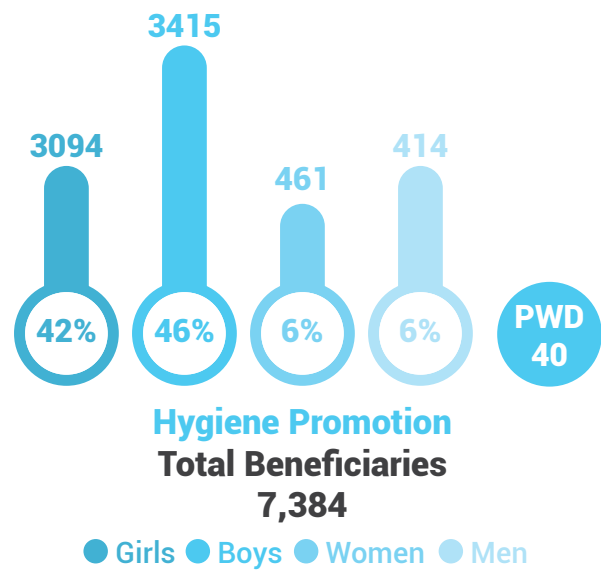
WASH

Water, Sanitation, & Hygiene

Constructing water projects that enable access to safe water and sanitation.









19 Deep Wells

9,500

Total Beneficiaries



240 TubeWells

60,000

Total Beneficiaries





Seasonal Projects

MWL's seasonal projects help improve the life of people by bringing them hope. These seasonal projects range from food to gifts. During the most crucial times, projects include the distribution of food baskets, prepared hot meals, Qurbani, Eid gifts, and winterization kits. MWL has distributed winterization items to those experiencing cold winters which included heaters, winter clothing, and diesel gallons.

Eid Clothes and Gifts

5,125

Orphans

New projects are implemented every season to focus on community needs.



700 Sheep
52,500
Total Beneficiaries



125 Lamb

4,220

Total Beneficiaries



Ramadan Meals

14,500

Meals

4,833

Total Beneficiaries



Winter Jackets

5,125

Total Beneficiaries



Zakat Al-Fitr

71

Families



Mothers's Day Celebrations



Carnivals



Our Partners



THE UNITED NATIONS CHILDREN'S FUND



UNITED NATIONS OFFICE FOR THE COORCINATION OF HUMANITARIAN AFFAIRS



THE UNITED NATIONS MIGRATION AGENCY



THE DEUTSCHE GESELLSCHAFT FÜR INTERNATIONALE ZUSAMMENARBEIT GMBH



WAR CHILD ORGANIZATION



LIFE FOR RELIEF AND DEVELOPMENT (USA)



TRAUMA AID UK ORGANIZATION

Independent Auditor's Report

Mercy Without Limits, Inc.

Combined Statement of Financial Position December 31, 2020

ASSETS

Current Assets

Cash & cash equivalents (Note 2)	\$ 3,077,093
Receivable (Note 4)	672,398
Inventory - Donated medical items (Note 5)	7,574,240
Investment (Note 6)	30,000
Prepaid Expenses	4,730
Security Deposits	4,027
Total Current Assets	11,362,488

Fixed Assets (Net of \$80,221 Accumulated Depreciation) (Note 7)	88,955
---	--------

Total Assets **\$11,451,443**

LIABILITIES AND NET ASSETS

Current Liabilities

Accounts Payable	\$ 318,510
Deferred Income	135,379
Accrued Payroll & Taxes Payable	(1,742)
Other Liabilities	39,210
Total Current Liabilities	491,357

Long-term Liabilities

SBA PPP Loan	65,400
EIDL Loan Advance	8,000
Total Long-term Liabilities	73,400

Total Liabilities **Total Liabilities**

Net Assets

Net Assets without Donors Restriction	3,312,614
Net Assets with Donors Restriction (Note 5)	7,574,240
Other Comprehensive Income/(loss) -Cumulative Currency Translation Adjustment	(168)

Total Liabilities and Net Assets **\$11,451,443**

Mercy Without Limits, Inc. and Affiliates

Combined Statement of Activities

For the Year Ended December 31, 2020

	Without Donor Restriction	With Donor Restriction	Total
REVENUE			
Donations/Contribution & Support	\$ 8,588,333		\$ 8,588,333
Grants (MOUs)	1,873,790		1,873,790
Other Income	320		320
In-Kind donation (Note 5)	-	\$7,574,240	\$7,574,240
Total Assets	10,462,443	7,574,240	18,036,683
EXPENSES			
Program			
Health	9,878,839		9,878,839
Education	2,718,797		2,718,797
Protection	3,695,579		3,695,579
Emergency Response	232,067		232,067
FSL & ERO	736,870		736,870
NIF, WASH, & Capacity Building	416,498		416,498
Total Program Expenses	17,678,650	-	17,678,650
Management & General			
Payroll Expenses	620,645		620,645
Other Administrative Expenses	554,696		554,696
Total Management & General	1,175,341	-	1,175,341
Fundraising	374,495		374,495
Total Expenses	19,228,486	-	19,228,486
Change in Net Assets Without Donor Restriction	(8,766,043)		-
Change in Net Assets With Donor Restriction (Note 5)			(1,191,803)
Net Assets Without Donor Restriction Beginning of Year	12,078,657		12,078,657
Net Assets End of Year	\$3,312,614	\$7,574,240	\$ 10,886,854

www.mwlimits.org

    mwlimits

